

Climate in a Row

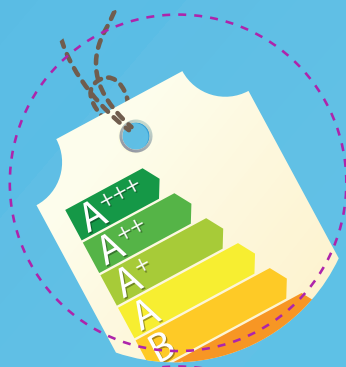
Participants: 2 players and 1 controller to manage the time and the answers.

Instructions: First, place the question cards on the circles with the images facing up. In order to place a token in the board, each player must correctly answer the question underneath the question card chosen. If they answer correctly, they can keep the

question card and place a token. If they do not, their opponent can answer correctly to keep the question card and place their token in that space. The winner will be the first one able to place three tokens in a row before their opponent.

If the game lasts more than 10 minutes, the winner will be the one who has more question cards.





On the energy efficiency label of electrical appliances, which is the best rating?

- a. 10.
- b. A++.
- c. G.



What is the most efficient transportation option to go to buy bread?

- a. Public transportation.
- b. On foot or by bike.
- c. Car or motorcycle.



Which of the following activities do you think wastes more water?

- a. Brushing your teeth with the tap turned off.
- b. Flush the toilet.
- c. A quick shower.

Cut and paste each question card to its image.



Which of these materials can be recycled to make new ones?

- a. Paper.
- b. Glass.
- c. Both.



Where should used batteries be disposed?

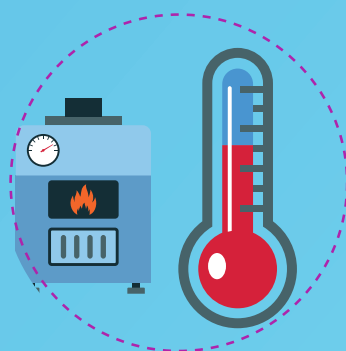
- a. In the trash.
- b. In a container for bottles.
- c. In a local waste facility.



Which activity wastes more water?

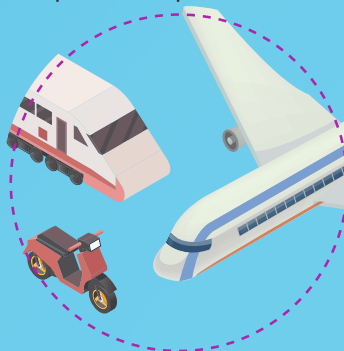
- a. Taking a shower.
- b. Taking a bath.
- c. Flushing the toilet.

Cut and paste each question card to its image.



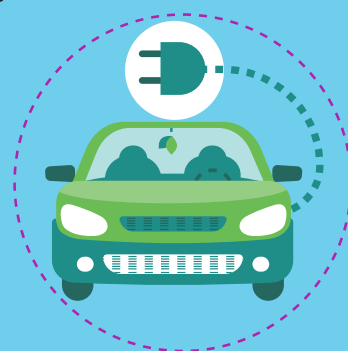
At what temperature should the thermostat be set to in winter to be comfortable without wasting energy?

- a. 27°C
- b. 10°C
- c. 21°C



Which of these means of transportation is more polluting?

- a. A motorcycle.
- b. A train.
- c. A plane.



When an electrical appliance is very efficient, it means that...

- a. It consumes a lot of electricity to work.
- b. It consumes little electricity to work.
- c. It works very well.